



Koorana Child & Family Services
Annual Activity & Impact Report 2025

All children. All abilities. All possibilities.



CONTENTS

03	Our Vision and Purpose
05	The Year in Review
06	Chair's Report
08	CEO's Report
13	Our Services
14	Early Childhood Education Services
18	Early Intervention and Allied Health Services
22	Child and Family Support Services
32	Our Stories
36	Looking Forward for Our Services
38	Working Groups
40	Child Safe Initiatives
42	Making An Impact Together
51	Our People
52	Governance Report
54	Treasurer's Report
58	Letter from the Auditor
61	Get Involved
62	Thank You

Acknowledgment of Country

We acknowledge the Traditional Owners of the Land we live and work and pay our respects to Elders past, present and emerging. We recognise their continuing connection and care of Country, and the education they have provided to children for thousands of years.



OUR VISION AND PURPOSE

> Our Vision

All children of all abilities have the opportunity to explore **all possibilities** in safe, supportive and inclusive environments.

> Our Purpose

We **empower children** and **their families** through the provision of high-quality services and a collaborative partnership with community supports.

> Our Core Values



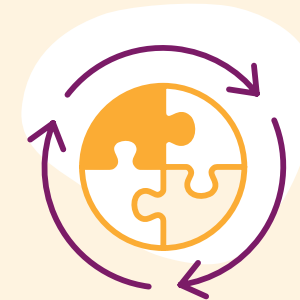
Inclusion



**Child and
Family Centred**



Collaboration



**Continuous
Improvement**

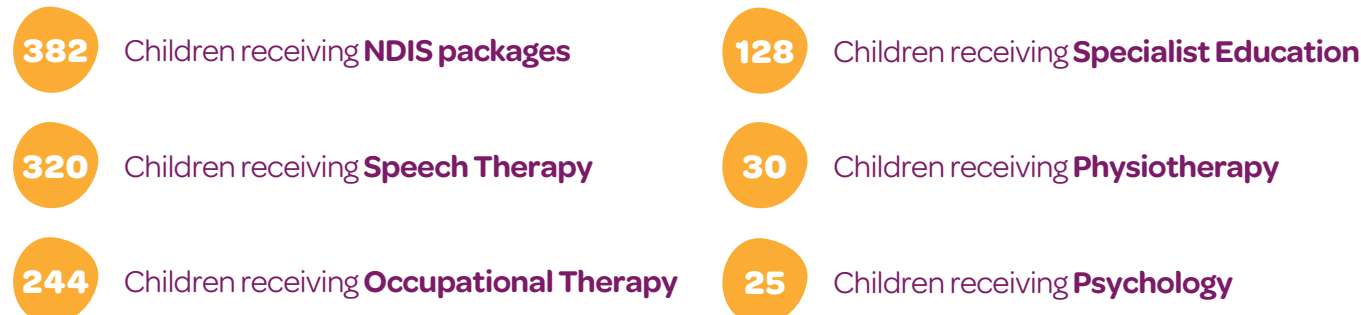


Accountability



EMERGENCY
ASSEMBLY
POINT

THE YEAR IN REVIEW: 2024-2025 FINANCIAL YEAR



Based on the client survey responses regarding children's progress and achievement of objectives, most families reported positive outcomes.



That their child had made progress since accessing Koorana's services.

CHAIR'S REPORT



“

Together, we will continue to build on our successes and work towards a brighter future for all.”

It is my privilege to present the Chair's Report for the 2024-2025 Financial Year. Each year at Koorana brings its own challenges and opportunities, but this past year stands out for the intensity of reforms across both early childhood education and disability sectors. Through it all, Koorana has remained anchored in its purpose and values – championing inclusion, evidence-based best practice and a deep commitment to supporting children and families to thrive.

This has been a year where the organisation's resilience, leadership and community partnerships have truly come to the forefront. Despite the pressure of policy changes and rising complexity in family needs, Koorana has continued to deliver high-quality services while strengthening its organisational foundations.

Expanding Access

One of the most significant milestones of the year has been the progress toward our third preschool at Bass Hill. This project represents more than just expansion — it reflects our long-standing commitment to equitable access to early learning for local communities who need it most. Seeing the building works commence and move steadily forward has been a proud moment for all of us.

A special acknowledgement is owed to Rodney Timm, fellow Board Member, whose relentless persistence, practical guidance and deep commitment drove this project across major hurdles. His contribution has been instrumental in bringing this vision to life. The Board and I are truly grateful for his leadership and dedication.

Leadership Through Reform

This year has again highlighted the importance of strong and values-driven leadership. Our CEO, Morgan, has demonstrated exceptional clarity, calmness and conviction as she navigated the organisation through a rapidly changing policy environment. Her leadership across national and state advisory groups has elevated Koorana's voice in crucial sector conversations. Morgan has balanced operational leadership with strategic advocacy in a way that reflects both integrity and vision. On behalf of the Board, I offer my deepest appreciation.

Supporting Morgan is an outstanding Executive Leadership Team whose professionalism and collaborative strength have ensured that Koorana remains stable and future-focused. They have guided the implementation of new systems, strengthened child-safe practices, advanced our inclusion frameworks, and supported our workforce with skill and compassion. Their contribution is felt in every program and every family interaction.

The Heart of Koorana

The real story of Koorana lies in the commitment of its people. Our educators, therapists, family support workers, administrators and support teams have shown remarkable resilience and passion in a year marked by sector pressures. They have continued to show up each day with empathy, expertise and an unwavering dedication to children and families. Every milestone a child reaches, every family supported, and every moment of confidence restored has been made possible by their work.

To the entire Koorana team — thank you. Your passion shapes this organisation and changes the lives of countless children.

Partnerships That Strengthen Communities

Koorana's work is enriched by the trust and collaboration of our families, donors and community partners. To our parents and caregivers, we are grateful for the trust you place in us, for your engagement and for allowing us to be part of your children's journeys. To our donors and philanthropic supporters, your generosity has been instrumental in the progress of our new preschool and in strengthening our capacity to serve more families.

Our partnerships across education, health, early childhood networks, local councils and community organisations remain central to amplifying our impact. Together, we are building stronger pathways of support for children who deserve opportunities to learn, grow and belong.

Governance, Stability and Forward Planning

The Board has continued to provide steady stewardship throughout this period of reform and growth. We have maintained strong oversight of financial sustainability, risk management, operational effectiveness and workforce wellbeing. I am deeply grateful to each Board Member for their insight, commitment and thoughtful leadership. Their collective contribution has been central to ensuring that Koorana remains a trusted and stable organisation.

Looking Ahead

As we move into FY'26, we do so with renewed strength and clarity. The Bass Hill Preschool will soon become operational, our influence in sector reform continues to grow, and our commitment to inclusion and best-practice service delivery remains unwavering. The coming year will bring new opportunities to deepen our impact, strengthen our workforce and enhance the experiences of children and families.

Closing Reflections

The story of this year is one of teamwork, hope, and shared purpose. I extend my heartfelt thanks to our CEO, leadership team, staff, Board, families, donors, partners and supporters. Your dedication and trust have made this an exceptional year for Koorana.

Together, we stand ready to continue building a future where every child has the chance to thrive.

Warm regards,



Sujeet Jena

Chair, Koorana Child & Family Services Ltd.

CEO'S REPORT



**“
This is a moment
to celebrate the
efforts of our team
members who have
worked hard to
achieve these goals.”**

Once again, I am pleased to present Koorana's Impact Report for the 2024-2025 Financial Year.

This year has been busier than most due to the reform-rich environment across the early childhood sector. Further, closer to home, Koorana has been focused on expanding our service offerings for families in our community and continuing to improve our systems to streamline our work and improve our employee experience.

I am proud of the dedicated efforts of our teams on all of these important activities in the last year. Below is an outline of some of the progress on those projects and the team's achievements.

OUR CUSTOMERS

Develop new service offerings for OUR CUSTOMERS to better meet their needs and improve Koorana's sustainability.

- › Our Bass Hill Preschool commenced building works in August 2024, with anticipated completion in October 2025. We aim to be operating this new centre from January 2026. This centre will expand access to early learning to a local community in need.
- › We successfully received funding from the Department of Education to trial a school holiday program in our preschools – expanding access to early childhood education and care for our families in Roselands and Lakemba.
- › We have developed and launched a FREE webinar series for families and professionals which is now offered monthly to the community.

OUR PEOPLE

Strengthen our offerings, experience and culture for OUR PEOPLE to attract and retain talent.

- › Koorana is implementing a Diversity and Inclusion Framework which focuses on ensuring that we are a safe place to work for all team members and a safe service for families. Our team received training, a survey was completed to identify priority areas and implementation is underway. This has included the development of a Decision Making Tool for new initiatives to ensure they promote inclusion, safety and belonging.

OUR SERVICES

Ensure a consistent, best-practice approach to all of OUR SERVICES that embeds innovations and is evidence-based.

- › Koorana continues to implement its Child Safe action plan to continuously strengthen its child-safe practices through reflection and safeguards.
- › This year we also developed a Disability Royal Commission action plan as well to ensure we are always upholding the rights of children with disabilities we support.
- › Our Integrated Practice Model is being documented so that we can share this with the wider sector in order to enable inclusive practices more widely in Early Childhood Education and Care (ECEC) settings.
- › Our journey of implementing the Pyramid Model across the organisation commenced with training of our leaders in FY25 and training of the whole team in early July 2025. We are completing organisation-wide implementation in FY26.

OUR RESILIENCE

Ensure our governance and systems enable and ensure safe, effective, efficient work practices.

- › We transitioned our client information management systems in this past year, moving to OWNA for our preschools and Nightingale for our Early Intervention and Allied Health services. We are continuing to implement these systems to enable improved accessibility and realise their full potential.
- › Our team began work on development of our Environmental, Social, and Governance (ESG) Strategy.
- › Koorana completed assessment of our psychosocial safety for our employees and was pleased to find Koorana has minimal concerns in respect to our psychological health and safety risks. We did identify that we have opportunities to improve in respect to the emotional demands, and role conflict. We have developed an action plan to continuously improve and monitor progress in these areas.

OUR PARTNERS

Develop strong relationships and engagement with OUR PARTNERS to support our families and the organisation.

- › Koorana has been blessed by enormous community and philanthropic support for our new preschool. We have a feature section on that in this report which we invite you to review as we celebrate those supporters.
- › Koorana has worked closely alongside our alliance partners in the last year to consider reforms underway, especially in the context of Foundational Supports for children with developmental concerns, delays, disabilities or differences. We have participated actively in Co-Chairing the Australian Child and Family Supports Alliance (ACaFSA), the Child and Family Supports Alliance NSW (CaFSA NSW), the Early Childhood Intervention Best Practice Network (ECIBPN), as well as my role serving as Vice Chair of the National Disability Services NSW State Committee. Our joint advocacy in this space has been to ensure that the final design of this system aligns to family needs and is aligned with the best practice guidelines for early childhood intervention. As we write this report, design work is ramping up with government and we are pleased that we can participate through my roles on the Commonwealth Thriving Kids Advisory Group, the NSW Foundational Supports for Children Advisory Group, and the NDIS' Children's Expert Advisory Group.

Whilst it has been a year with much to celebrate, our families and team have been impacted by policy changes within the NDIS. The practitioner travel rate being cut by half has been particularly disappointing. For all our children, delivering supports to them in school, home and community is critical to the success of their supports. In these environments we can better understand their needs, upskill their caregivers and more effectively tailor supports to enable their success in those environments. Further, to remove a child from school for therapy is against our ethos of inclusion – they deserve to have the same access to education as all children.

In addition to this, for many of our families, it is not possible or practical for them to attend our clinics due to transportation, work, or life complexities and caring responsibilities. We are concerned that this policy change is not aligned to the recently released National Best Practice Framework for Early Childhood Intervention and we continue to call on government to review this decision for children and young people.

There is no denying the pressure this is placing on Koorana, its dedicated employees and our families. Despite this, we remain committed to continuing to find ways to deliver best practice supports and our team has embraced this change as best as possible, thinking creatively to continue to meet the needs of our families.

With such a significant year for us, we want to use the opportunity to pause and thank everyone who has made it possible. To our Board of Directors and our Chair, I am ever-grateful for the confidence you have in me to lead our team and organisation.

To our staff team, your unwavering commitment to our families despite difficult policy changes and rising intensity of family needs, speaks volumes of your values. We value you and your work deeply. To our community and sector partners, your solidarity during this year gives us hope and assurance for the future – together, we can change lives for children and families in this generation. We are proud to stand alongside you. And to our funding partners, you have been truly pivotal in helping us to deliver positive outcomes in the community. We are so grateful to each of you.

With my deepest thanks,

A handwritten signature in black ink that reads "M Fitzpatrick". The signature is written in a cursive, flowing style.

Morgan A Fitzpatrick
CEO, Koorana Child & Family Services Ltd.



THE VERY HUNGRY CATERPILLAR
by Eric Carle

Little Red Riding Hood
by Patricia MacLachlan

When I Grow Up
by David Laing

The CRAYONS' BOOK OF FEELINGS
by Deborah Johnson

FABER-CASTELL
Water Colour Markers

The Tale of Haleema and The King
by Haleema





OUR SERVICES

For nearly 50 years, Koorana has been supporting children and their families to learn, grow, and reach their full potential. Established in 1976, we continue to evolve to meet the changing needs of our community—creating inclusive environments where all children can belong and thrive and supporting parents on their parenting journey.

Our vision is that **all children** of **all abilities** have the opportunity to explore **all possibilities** in safe, supportive and inclusive environments. Our purpose is to empower children and their families through the provision of high-quality services and a collaborative partnership with community supports.

Koorana delivers a broad range of therapeutic, educational, and family support programs for children and young people aged 0–18 years. We also support professionals in developing their inclusive practices and knowledge base.

Our work is delivered through four key service streams:

- › Early Childhood Education
- › Early Intervention and Allied Health
- › Child and Family Support
- › Professional Support

In the last year, Koorana has launched new service offerings including webinars and workshops for parents and carers to strengthen understanding, confidence, and connection, as well as consultancy and training for professionals working with children and families—further extending our role in building an inclusive and knowledgeable community.

Koorana strives for outcomes that are built upon a foundation of our core values of:

› Inclusion:

We celebrate diversity, treat one another with respect, and demonstrate empathy and understanding for all.

› Child and Family Centred Practice:

We put child and family's needs and wishes first and respect their right to self-determination.

› Collaboration:

We work with families, partners and community collaboratively. Our teams work together, and we take a consultative approach to leadership.

› Continuous Improvement:

We value and celebrate feedback. We provide this constructively. We believe in lifelong learning and seek to find new ways to improve our practice.

› Accountability:

We are accountable to our ethical and professional standards, environmental sustainability and organisational sustainability. We show commitment and integrity.

EARLY CHILDHOOD EDUCATION SERVICES

> Preschools

Koorana continues to operate two inclusive preschools within the Canterbury-Bankstown local government area. Phillip Street Preschool (PSPS) in Roselands provides 40 places per day and supports approximately 100 families a week across 2-day placements. Croydon Street Preschool (CSPS) in Lakemba offers 24 places per day and supports around 60 families a week. Both preschools serve highly diverse and multicultural communities and operate in line with the NSW Department of Education school terms.

Our preschools deliver a holistic educational and intervention program grounded in the National Quality Framework and our commitment to equity, access, and inclusion. Both PSPS and CSPS maintain a “Meeting the National Quality Standard” rating. Twenty-five percent of our places are reserved for children with high learning support needs or disability, supported through an integrated model that blends early childhood education with early childhood intervention. Our high 1:6 educator-to-child ratio continues to exceed regulatory requirements and reflects our ongoing commitment to high-quality practice.

Programs are delivered by university qualified early childhood teachers and educators, alongside specialist practitioners who provide targeted therapeutic support for children with identified needs.

Throughout the 2024–2025 financial year, our preschools enrolled children from a wide range of cultural backgrounds, including Bangladesh, India, Pakistan, Indonesia, Lebanon, Serbia, Sri Lanka, Tonga, Myanmar, Somalia, and Turkey. Across the year, 15 children at CSPS and 25 children at PSPS accessed high learning support needs intervention through our integrated allied health services.

This year has also been a significant period of growth, with construction underway for our third preschool in Bass Hill. This purpose-built 40-place inclusive preschool is funded by the NSW Government in partnership with Koorana and private donors. Construction has progressed throughout the reporting year, and the service is projected to open in Term 1, 2026.

“

The Bass Hill Preschool will further strengthen our commitment to inclusive education and expand access to high-quality early learning for families in one of the most underserved communities in the region.”

METTA BOOTH

Head of Early Childhood Education Services

Phillip Street Preschool (PSPS)

- > **207** children attending
- > **50** children with High Learning Support Needs (HLSN)
- > **1** confirmed Aboriginal family
- > Majority of families are Culturally and Linguistically Diverse (CALD), with cultural backgrounds including Bangladesh and South-East Asian

Croydon Street Preschool (CSPS)

- > **136** children attending
- > **24** children with High Learning Support Needs (HLSN)
- > Majority of families are Culturally and Linguistically Diverse (CALD), with cultural backgrounds including Bangladesh, Pakistan, India, Indonesia, Burma and Malaysia



Mukti Parveen

Wellways
Cancer Counselling



We celebrated many achievements during the 2024-2025 Financial Year and some of them are listed below:

Implementation of the Pyramid Model

This year, the preschools strengthened their commitment to inclusive practice through the continued implementation of the Pyramid Model. Inclusion Support Toolkits were developed and embedded to guide educators in meeting diverse learning needs. The team introduced new program experiences, including “Tea Time,” to promote social-emotional development and connection. Children’s groupings were also refined to enhance peer engagement and support more targeted teaching strategies.

Collaborative Quality Improvement with external practitioner, Jo Mavrigiannakis (Centre Performance Coach NSW & ACT @Goodstart) on ECERS & SSTEWS Rating Scale

Educators worked closely with Jo to deepen their understanding of the ECERS and SSTEWS tools, using these frameworks to strengthen environmental quality and intentional teaching. This collaboration enhanced the creation of literacy and numeracy rich environments and supported educators to build their skills in reflective practice and continuous improvement.

Embedded Learning Support Model – Practice Based Coaching

Croydon Street Preschool continued to integrate targeted learning support into daily routines and program experiences through the Embedded Learning Support Model pilot. In January 2025, the preschool commenced a new collaboration with Noah’s Ark, marking an important step in strengthening inclusive practice. Although still in its early stages, this partnership has already begun to guide educators in refining their strategies and deepening their capacity to support children with additional needs.

Family and Community Engagement

Family partnership remained a strong focus, with increased involvement in daily program experiences through open communication and shared decision-making. The preschools facilitated community activities that reflected their values and cultural diversity, including story time, ‘Tea Time’ experiences, cooking experiences, and special events. These initiatives helped create a welcoming, inclusive environment where families felt connected and engaged.

Navigating Transitions and Challenges

The 2024–2025 year brought several challenges that also created opportunities for growth and reflection across our preschool teams. As the sector continued to evolve, we worked proactively to respond to shifting expectations, particularly around inclusion, accessibility, and quality. Regulatory changes required careful adaptation, and our leadership teams engaged in ongoing professional development to ensure our practices remained aligned with emerging standards.

Internally, we continued to refine our processes to better reflect family-centred practice. Adjustments to our service delivery models allowed us to respond to the diverse and changing needs of families, while stronger collaboration across teams helped maintain consistency and continuity of care. Our staff navigated periods of personal and professional change with resilience and commitment. Supporting staff wellbeing remained a priority, and we worked to foster a culture of adaptability, reflective practice, and shared responsibility.

Community engagement also remained central to our work. We strengthened our focus on culturally responsive practice and deepened relationships with families through transparent communication and flexible support strategies.

EARLY INTERVENTION AND ALLIED HEALTH

Koorana's Early Intervention and Allied Health (EIAH) team continues to grow as a leader in paediatric disability services across the South, South-West, and Inner West of Sydney. We work with children aged 0–18 years with developmental delay and disability, and their families, through a transdisciplinary model of care that brings together speech pathologists, occupational therapists, physiotherapists, psychologists, and specialist teachers.

Our team is committed to best practice, delivering services for children in everyday settings — including homes, preschools, schools, and community spaces. Further, we champion transdisciplinary practice which prioritises collaborative teamwork in alignment with the goals of each unique child and family. Our family-centred, capacity-building approach ensures that families and educators feel confident to implement strategies beyond therapy sessions, helping children reach their goals and thrive in their daily environments.

“

Above all, the greatest achievement has been the team itself. Practitioners have shown remarkable resilience and professionalism through system transitions, policy changes, and increased workloads — all while maintaining a commitment to inclusion and family-centred practice. Their efforts give us great confidence as we look ahead.”

> **Strengthening Practice and Building Capability**

Over the past year, our team has been strengthened through training in transdisciplinary practice and the Pyramid Model for Supporting Social Emotional Competence in Young Children. These frameworks have refined how we work together, ensuring that support is holistic, developmentally targeted, and responsive to children's social and emotional needs. By investing in relationships and inclusion, we continue to help children thrive — not only in therapy, but in every aspect of daily life.

A key development this year has been the introduction of Practice Leads across disciplines. This new leadership layer has brought stronger clinical direction, ensuring services remain consistent and evidence-based. It has also increased the availability of support and supervision, giving practitioners timely guidance and reducing isolation in practice. In addition, expanded mentoring and professional development opportunities have built practitioner confidence and capability.

The Practice Leads have also led the development of Koorana's Clinical Practice Guidelines, embedding a consistent, high-quality approach across all disciplines. Collectively, these changes have created a more supported and capable team — and ultimately, stronger outcomes for children and families.

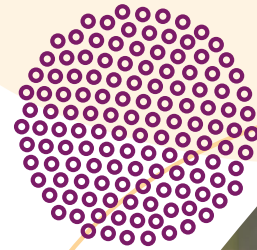
> Driving Best Practice and Expanding Opportunities for Children and Families

The introduction of Practice Leads was one of our most significant achievements this year. Their leadership has provided clear clinical direction, consistent practice standards, and stronger professional support across disciplines. They have increased supervision and mentoring opportunities and helped foster a culture of reflective practice and learning.

Several new services were also launched to broaden access and engagement:

- > Developmental Consults offered families a supportive first step, providing reassurance, practical strategies, and clear referral pathways.
- > Psychology Assessments expanded our scope to include cognitive and educational evaluations, helping families and schools' access timely, high-quality assessments.
- > A new webinar series for parents and professionals extended our reach into the broader community, sharing evidence-based strategies and building confidence beyond our immediate client base.

Our partnership with The Smith Family completed its third successful year of the Foundations for Growth program, which again received outstanding feedback from schools, families, and funders. Entering its fourth year, the program continues to strengthen participation and readiness for learning across public schools in the Bankstown area.





> Responding to Challenges and Change

The past year brought both significant change and opportunities for growth. Funding pressures continued, with the announcement of no indexation to NDIS therapy rates, a reduction in the physiotherapy rate, and halved travel rates. While these shifts created strain, they also encouraged us to find smarter, more sustainable ways of delivering services. By refining processes and making careful decisions about resource use, we maintained accessibility for families while protecting the quality of care.

Referrals remained lower than anticipated due to ongoing delays in NDIS plan approvals, creating uncertainty for families. In response, practitioners worked flexibly — adjusting caseloads, maintaining close relationships with referrers, and guiding families through funding processes. These challenges reinforced the importance of advocacy, communication, and teamwork, and strengthened our resolve to ensure children gain timely access to the supports they need.

The transition to our new client information management system, Nightingale, was one of the most complex organisational changes in recent years. Learning a new system while managing daily workloads was demanding, yet the team adapted quickly. Nightingale is already showing its value by creating clearer data and better oversight, helping us serve families more efficiently and effectively.

Despite increased workloads and changing systems, practitioners rose to the challenge — meeting targets, supporting one another, and continuing to provide high-quality, family-centred services. This resilience and dedication reflect the strength and professionalism of the EIAH team.

“

Across every challenge — from NDIS changes to new systems and increased workloads — our team continued to show strength, unity and purpose. They problem-solved together, supported one another, and never compromised on the quality of care provided to children and families. I could not be prouder of their resilience and dedication.”

RIAL KIDSON

Head of Early Intervention and Allied Health

CHILD AND FAMILY SUPPORT SERVICES

At Koorana, we are committed to deliver services that are designed to strengthen families, empower parents, and create inclusive opportunities for children to learn and thrive.

We place a strong emphasis on play as a foundation for learning, while also equipping families with the confidence and skills to support their child's development in the early years.

Through initiatives such as Supported Playgroups, Start Strong Pathways, and the Canterbury Child and Family Interagency (CCFI), we foster environments where families, professionals, and community networks come together. This collaboration ensures children and families across the Canterbury region have more equitable access to supports, stronger connections, and coordinated pathways.

Together, these services provide a holistic model of child and family support, enriching children's learning and wellbeing, while building resilient, confident families and stronger communities.

This year, our Child and Family Support Services achieved significant outcomes across five key areas:

› **Empowering Families**

Families built confidence, skills, and knowledge to support their children's learning at home, with a strong focus on play-based activities that nurture development in the critical early years.

› **Building Readiness to Learn**

Children developed social, emotional, and learning skills through playgroup experiences, helping prepare them for a smooth transition into school and lifelong learning.

› **Strengthening Partnerships**

Our teams worked alongside families in respectful, collaborative ways — addressing concerns, providing guidance, and connecting parents to vital support networks and services.

› **Fostering Community Connections**

Families actively engaged in inclusive, multicultural spaces where they could share stories, learn from each other, and build a sense of belonging within the community.

› **Enhancing Interagency Collaboration**

Through our leadership of the Canterbury Child and Family Interagency (CCFI), we strengthened professional networks across the region. This collaborative approach has improved coordination, shared knowledge, and ensured children and families have more equitable access to local services.

“

Together, these outcomes highlight how Koorana's Child and Family Supports create lasting impact, empowering families, preparing children for school, and building stronger, more connected communities.”

> Supported Playgroups

Koorana's Supported Playgroups provide a welcoming, inclusive, and fully funded service for families with children aged 0–6 years across the Canterbury Bankstown local government area. Our program offers a soft entry into early childhood education, giving children opportunities to socialise, learn, and develop through play-based experiences while building confidence and wellbeing.

Run by qualified Early Childhood Educators and Family Support Workers, the supported playgroup program also provides parents, carers, and grandparents with guidance on child development, parenting skills, and access to information and referral pathways. Our playgroup sessions foster social connections, enhance the parent-child relationship, and create safe, supportive spaces for families from all cultural and ability backgrounds.

Our playgroups are delivered across multiple community parks and venues in Bankstown, Belmore, Lakemba, Canterbury, Revesby, and Riverwood, ensuring broad geographical coverage and accessibility for local families. Participation is free, with registration available onsite.

Playgroup Locations 2024-25

Playgroup in the Park – Canterbury:

Jubilee Reserve Lakemba
St Mary Mackillop Canterbury
Terry Lamb Reserve Belmore

Playgroup in the Park – Bankstown:

Bankstown City Gardens
Johnstone Reserve Revesby

Venue based playgroup – Canterbury:

Lakemba Uniting Church Hall
Riverwood Public School

Venue based playgroup – Bankstown:

Bankstown Police Citizens
Youth Clubs (PCYC)



> Connecting Communities, Celebrating Culture, Supporting Families

The Supported Playgroup team had a vibrant and successful year, marked by strong community engagement, professional growth, and innovative programming.

Community Engagement:

Our team participated in the Canterbury-Bankstown Picnic Day, showcasing the importance of playgroups in a child's early development and connecting with local families.

They also represented Koorana at CCFI forums, local playgroup forums, transition-to-school forums, and the Diversity and Inclusion Working Party, ensuring the voice of families is included in community planning and decision-making.

And, they supported the annual Paint the Town REaD initiative by supplying and preparing resources to promote early literacy through reading, talking, singing, and rhyming with children.

Enriching Playgroup Experiences:

A valued highlight of the year was the involvement of local Community Health Nurses across our supported playgroups. Their visits provided families with direct access to expert advice on child health and development, from answering everyday parenting questions to identifying early developmental concerns.

Nurses supported families in making clinic appointments, provided referrals to relevant support services, and offered reassurance and guidance tailored to each child's needs. These connections not only strengthened the relationship between families and local health services but also ensured that parents felt informed, supported, and confident in accessing ongoing care for their children.

Another highlight for families were special visits from Deadly Ed, an Aboriginal Education provider. Our playgroup friends were led by facilitator Bec in a morning filled with Aboriginal cultural learning, storytelling, and hands-on activities across five of our playgroup locations. Children and parents alike had the opportunity to experience and celebrate the richness of Aboriginal culture in an engaging and respectful way. The session not only deepened cultural awareness but also strengthened our commitment to embedding Aboriginal and Torres Strait Island perspectives across playgroup programming.

The team hosted Healthy Eating and Transition to School workshops in partnership with Sydney Local Health District, facilitated by Grace Vu and supported by Bengali, Urdu, and Nepalese translators to ensure cultural inclusion.

Lastly, we collaborated with Koorana's Early Intervention and Allied Health team, with speech therapists, occupational therapists, and psychologists who visited playgroups to provide targeted support to children and families.

Team Growth and Development:

We welcomed new Playgroup Support Workers Ashley, Selu, and Leila to the playgroup team, strengthening our capacity to serve families across multiple venues.

And, we gained valuable insights and inclusivity through the contribution of a neurodivergent volunteer, Pearl who supported the program for six months.

Continued professional development for staff, including:

- Inclusion Ready Playgroup Guide (EACH)
- Pyramid Model Training
- Implementation of Indigenous Perspectives in Programming (Koori Curriculum)
- Accidental Counselling Training

General Playgroup Highlights:

- Consistently delivered inclusive, play-based sessions across Canterbury-Bankstown parks and venues, engaging families from diverse cultural and ability backgrounds.
- Strengthened parental confidence and capacity through everyday playgroup interactions, fostering meaningful peer-to-peer support networks.
- Continued to provide a soft entry point to early childhood education, ensuring children transition to school better prepared socially, emotionally, and developmentally.

“

Together, these achievements reflect the team's dedication to supporting families and children through high-quality, inclusive, and community-focused playgroup programs.”

Responding to Challenges and Change

The Supported Playgroup team has continued to provide a consistent and high-quality service throughout the year, but like many community-based programs, we have experienced some challenges that required adaptability.

- **Weather Disruptions:** Outdoor sessions in parks remain vulnerable to wet weather, which can lead to cancellations and impact family participation. While this is outside of our control, it highlights the importance of having a mix of indoor and outdoor venues available across the Canterbury-Bankstown area.
- **Growing Demand:** Increasing numbers of families are attending playgroups, and while this reflects the strength of the program, it requires careful facilitation to ensure all families feel included and supported.
- **Resource Coordination:** With multiple sites running each week, the logistics of transporting resources and setting up safe, engaging play environments can be quite complex.
- **Evolving Family Needs:** Families continue to present with diverse needs, including children experiencing developmental delays or parents seeking additional support, requiring our team to remain flexible, responsive and knowledgeable of and connection to external community support services.

These challenges have provided valuable learning opportunities for the team and reinforced our commitment to offering inclusive, accessible, and family-centred playgroups across the community.



Join our Facebook community



> Start Strong Pathways

Koorana's Start Strong Pathways (SSP) program provides high-quality, fully funded early learning opportunities for children aged 0–5 years who are not yet accessing preschool. Delivered across Lakemba, Wiley Park, and Campsie, the program offers a soft entry into early childhood education through daily, play-based sessions facilitated by two qualified Early Childhood Teachers.

Grounded in the Early Years Learning Framework and informed by evidence-based approaches including the Pyramid Model, Peep Learning Together, and Small Talk, the SSP program builds strong foundations for learning, confidence, and social participation. Families receive guidance on child development, access to resources that extend learning into the home, and supported pathways into preschool and early education settings.

A combination of playgroups, incursions, Transition to School support, and family education workshops ensures children and families experience culturally safe, inclusive, and developmentally rich early learning environments.

“

My kid loves Mums and Bubs. He literally waits for Tuesday. I love the dedication of the staff. They talk to you, understand your concerns regarding kids and advise you. Also they are very kind. The activity resources are always enough.”

Strengthening Early Learning Pathways for Children and Families

The SSP team delivered a strong and impactful year, marked by high engagement, intentional planning, and strengthened connections with families and community partners.

Educational Engagement Through Play-Based Learning

Across daily two-hour sessions, children explored hands-on, play-based experiences designed to develop early literacy, numeracy, social-emotional skills, and confidence.

Highlights included:

- > **Daily playgroups for babies, toddlers, and preschool-aged children**, intentionally planned each term and responsive to children's strengths and interests.
- > **A dedicated “Mums and Bubs” group for 0–3 year olds**, providing new mothers with a culturally safe space to build skills, confidence, and positive interactions with their children.
- > **Diverse incursions** including science, construction, and sustainability, giving families new opportunities to explore concepts together.
- > **Resource distribution** such as books, puzzles, literacy and numeracy packs, water bottles, and lunch boxes to extend learning at home.
- > **An inclusive 0–3 group delivered in partnership with a local school**, strengthening school–community connections.

Families consistently reported that these experiences helped them better understand their child's development and build confidence to support learning at home.

Supporting Pathways to Preschool

The SSP program delivered a range of activities to ensure families were informed, supported, and prepared for the transition into early education:

- Collaborative presentations with council, Local Health District teams, and interagency partners in multiple community languages.
- Distribution of an Early Childhood Services Guide, helping families understand service types, funding, and enrolment pathways.
- Resource sharing from the NSW Department of Education online library, including translated materials and Starting Blocks resources.
- Direct enrolment support, with families assisted to complete preschool waiting list forms and understand local options.
- Participation in local Transition to School programs, reaching families not engaged in preschool and highlighting the value of early education.

These initiatives resulted in 31 children enrolling in preschool during the reporting period, many for the first time.

Promoting the Importance of Early Education

The team played a key role in raising community awareness about the value of early learning:

- Family workshops on child development, nutrition, trauma-informed practice, toileting, and transitions.
- Partnership with Sydney Local Health District, delivering tailored sessions on dental health and nutrition.
- Collaboration with Tresillian, offering support on sleep, routines, and early parenting.
- Hands-on incursions, demonstrating the impact of play-based learning.
- Community outreach, including TTS support at Roselands Shopping Centre and engagement at Big Day Out and Family Fun Day.
- ECICP online workshops supporting families with school readiness and emotional wellbeing.

These activities strengthened families' understanding of the importance of early childhood education and built confidence to support learning at home.

Team Expertise and Community Impact

The SSP program is delivered by two accredited Early Childhood Teachers whose bilingual skills, cultural awareness, and deep sector experience create meaningful, lasting impact for families. Their consistent presence and warm, professional practice have built strong, trusting relationships—particularly with families experiencing financial hardship, settlement challenges, language barriers, trauma, or concerns about their child's development. This trust has been a catalyst for early identification of needs, stronger engagement in learning, and increased access to essential supports.

Their collaboration with allied health professionals directly strengthened developmental outcomes for children. Successful referrals connected families with timely speech, occupational therapy, and early intervention services that might otherwise have been out of reach. Ongoing professional learning in inclusion, Aboriginal and Torres Strait Islander peoples perspectives, counselling, and early intervention further enhanced the team's ability to respond sensitively and effectively to the diverse needs of the community.

Together, their expertise has expanded opportunities for children to thrive in safe, culturally responsive, and developmentally rich environments—laying stronger foundations for learning, wellbeing, and future participation in early education.

Responding to Challenges and Strengthening Our Impact

The SSP program continued to thrive despite several challenges that shaped how we refined our practice throughout the year.

- **Growing demand:** Increasing attendance placed pressure on session capacity, highlighting the vital role of SSP as an accessible early learning option for families facing financial hardship or settlement challenges. The team responded by strengthening routines and prioritising personalised support.
- **Complex family needs:** Families presented with diverse needs—including trauma, language barriers, and developmental concerns—which required sensitive, relational practice. This strengthened collaboration with allied health and community partners to ensure timely referrals and wrap-around supports.
- **Logistical demands:** Delivering daily sessions across multiple venues required careful coordination of resources and environments. While demanding, it led to more consistent, high-quality learning experiences across all sites.
- **Barriers to early education:** Some families struggled to access or afford preschool, reinforcing the importance of practical enrolment support and translation of key information to reduce barriers.

Despite these challenges, the team maintained a strong, inclusive program that ensured children and families continued to access safe, nurturing, and developmentally rich early learning opportunities.

CLIENT GROUP *as of 31 July 2025

- 165** Total number of children that participated in Start Strong Pathways activities*
- 53** Number of children with a disability that participated in Start Strong Pathways activities*
- 2** Number of Aboriginal children that participated in Start Strong Pathways activities*
- 165** Number of children from a low income family that participated in Start Strong Pathways activities*
- 165** Number of children from culturally and linguistically diverse backgrounds that participated in Start Strong Pathways activities*
- 5** Number of children at risk of significant harm (from a child protection perspective) that participated in Start Strong Pathways activities*
- 85** Number of children from a socially isolated family that participated in Start Strong Pathways activities*
- 31** Total number of children who enrolled in preschool during the reporting period, who were not previously enrolled*

> Canterbury Child and Family Interagency (CCFI)

CCFI is a project funded by the NSW Department of Communities and Justice. It aims to facilitate professional networking and to promote interagency collaboration across the Canterbury region. This interagency collaboration ensures that outcomes are improved and coordinated so that all children have equal access to services in the Canterbury region.

The CCFI network has grown from strength to strength and by now the network has 236 child and family workers on the mailing list. They include workers from local health, education, Council, child protection, family support, disability support, community neighbourhood centres, multicultural services and ethnic community organisations.

Of those members, many participated in bi-monthly interagency meetings, training and collaborative projects, including community engagement events. The CCFI network has played an important role for workers to share information, discuss local issues and develop plans and strategies to address them. For example, our annual school holiday event, “Big Day Out,” held at Hampden Park Public School in Lakemba, successfully engaged 500 children and their parents/grandparents. Not only did participants enjoy many fun activities, but they also connected with over 20 child and family agencies, ranging from health to education and children and family support.

This year, our “Transition to School” Outreach event changed venue from Roselands Shopping Centre to ANZAC Park in Campsie to reach more local families. As a result, we reached nearly 100 families. Staff from Health, Education Department and Koorana provided information and advice to families on enrolment, healthy eating and early intervention support. The translated information was particularly valuable for many newly arrived migrant families from Nepal, Bangladesh and China.

We continued to translate key messages for parents into different community languages, including Bengali, Arabic, Vietnamese and Nepali. Early this year, we started a new working group, focusing on developing “Better Communication Strategies”. Since then, the group has discussed what messages are important to families and how to deliver them effectively to reach different ethnic communities. Parent consultations and surveys have also been conducted.

Overall, the team at Koorana has risen to the various challenges and excelled in many ways. The engagement with families has improved significantly both in quality and quantity and there are aspects of service delivery developed which we will be able to continue in the future.





OUR STORIES

> Meet the Sideris Family*

Our journey with Koorana began three years ago, not long after we moved into the area. One Wednesday morning, we walked past Johnstone Reserve and saw a Supported Playgroup session. The staff were very friendly and welcoming, so we stopped to ask some questions. From that day, we have been part of the Koorana community.

Since then, our children have been attending Koorana Playgroups in both Revesby and Bankstown.

They have had many opportunities to discover, learn, and grow in a safe and inclusive environment.

We have seen many changes in their social, emotional, and communication skills. With the support of Educator Lee, and the wonderful team of Larissa, Helen, and Ashley, our neurodivergent children have developed confidence, stronger language skills, and the ability to engage in age-appropriate conversations. Their cooperative play has improved a lot, and it has been wonderful to see them explore the world with curiosity and joy.

Our girls really love the educators. Each week, they run to Lee and Ashley for a hug and to find out what activities are planned for the day. They enjoy imaginative play, creative art, physical play, story time, and especially sensory activities where they can explore, experiment, and get messy.

As parents, it has brought us great happiness to see our children thriving. We enjoy watching their confidence grow and seeing new friendships form. The support we have received from the team, especially in understanding neurodiversity and accessing early intervention, has meant a great deal to our family.

“
We feel so supported at Koorana. The staff are welcoming, knowledgeable, and caring. It truly feels like our community.”



> Ahmad's Story*

Our family arrived in Australia from Palestine about one year and six months ago. A friend told us about Koorana Supported Playgroups, so we decided to give it a try. From the first day, the team was kind and welcoming, and we felt very supported during our first months in a new country.

Since then, my children have been attending Koorana Supported Playgroups in our local area. The playgroup team has helped us in many ways. They supported us to understand government departments, connect with community services, and they also provided basic items and learning resources for our children when we needed them. This help made our start in Australia much easier.

"I have seen many improvements in my children since they began at Koorana. Their English has improved a lot, and now they can follow routines, join activities, and communicate with other children. Before playgroup, they were shy, but now they look for friends, share toys, and play happily with others."

Their confidence has grown as well. They join group time, songs, and stories with excitement, and they feel proud when they learn something new. Watching this progress makes me very happy as a parent.

My children enjoy games, dancing, music, colouring, cutting, and gluing pictures. The educators give them many opportunities to try new activities, learn new skills, and have fun in a safe and inclusive environment.

I also enjoy attending playgroup. I have met new friends and feel more connected to the community. The program has helped our whole family understand the preschool and school systems, which has supported our settlement in Australia.

I would recommend Koorana to other families. Supported Playgroup is a friendly and safe place where children learn and grow. Parents also receive support and guidance that is very helpful, especially for families who are new to Australia. I would tell other parents to come and try a session. You will find friendship, understanding, and support for your child and for the whole family.

“

For new families like ours, Koorana provides support and connection. It helped us feel less alone. I encourage other parents to attend to Koorana's Playgroups. It is a friendly place where children learn, play, and feel safe.”







> Sandra's Story*

When Sandra first began with Koorana in 2023, she experienced several developmental challenges. She was non-verbal, had difficulty with transitions, and ate fewer than ten food items. Daily routines such as feeding herself, toileting, dressing, and engaging in play were also areas where she needed significant support.

Sandra lives with her mum and grandparents, who play an active role in her early learning. The family's cultural background is an important part of their identity and helped guide how we worked together in partnership. With Mum as a single parent, therapy delivered at home and in the community has been ensuring the whole family is building the confidence in supporting her development.

Over time, Sandra transitioned into a supported placement at Phillip Street Preschool two days per week, where she has continued to thrive. She now uses two-three-word sentences, participates confidently in gardening, water play, turn-taking games, baking, and enjoys independent play with sensory toys and ball games.

Her diet has expanded from fewer than 10 foods to more than 30, including fruits and proteins she had previously avoided. Sandra is also nearly toilet trained, a milestone celebrated by her family and team.

Sandra's progress reflects strong collaboration between her family, Koorana therapists, the Koorana Philip Street Preschool Education team, and the Department of Education Early Intervention program. Her mother continues to be a highly engaged partner, reviewing session notes, attending meetings, and implementing strategies at home.

“
Today, Sandra is a confident, curious, and engaged learner—an inspiring example of what can be achieved when families and professionals work together.”

LOOKING FORWARD FOR OUR SERVICES

Early Childhood Education

Bass Hill Preschool Opening

Establishing our new 40-place site in Bass Hill and adapting Koorana's inclusive preschool model to meet the needs of a new community.

Assessment & Rating (A&R)

Preparing Croydon Street Lakemba Preschool for Assessment & Rating in 2026, with a continued focus on quality improvement and evidence of best practice.

Ongoing Implementation of the Pyramid Model

Deepening inclusive practice across both sites, extending toolkits, group experiences, and social-emotional learning strategies.

Strengthening Community Partnerships

Expanding collaborations with other early childhood organisations and local services to enhance inclusion, transitions, and family engagement.

Professional Development & Capacity Building

Continuing work with our current research projects to refine environments and strengthen intentional teaching in literacy and numeracy.

Family-Centred Practice

Embedding family voice in program decisions and growing culturally responsive practices and opportunities for family participation.

Early Intervention and Allied Health Services

Looking ahead, our focus in the coming year will be on consolidating recent changes while embracing new opportunities. With the transition to Nightingale complete, we will now optimise the system to improve client intake, allocation and waitlist management, oversight of caseloads and practitioner targets, and to facilitate clinical reporting. These refinements will make services more efficient for practitioners and more responsive for families.

The Practice Leads will continue guiding the completion and rollout of Koorana's clinical practice guidelines, ensuring staff are equipped to embed them in daily practice and under a transdisciplinary model. This will strengthen consistency across disciplines and reinforce our commitment to evidence-based, high-quality services. We will maintain our role in advocacy and sector leadership, pushing for sustainable NDIS pricing, improved access to early intervention, and funding models that allow best practice to flourish. These efforts remain central to ensuring children and families can access the supports they need.

The Pyramid Model for Supporting Social Emotional Competence will remain a cornerstone of our approach. Beyond embedding the framework across our own practice, we will begin offering training in the Pyramid Model for other agencies, helping to strengthen the capacity of the broader sector to support children's social and emotional development.

The new NDIS Thriving Kids initiative also brings exciting possibilities. While the final model is still emerging, it offers an opportunity to broaden and adapt how early intervention is delivered across Australia. Koorana is well placed to contribute, drawing on our skills, experience, and community connections to ensure families benefit from inclusive and effective supports under this new banner.

Above all, our confidence in the future rests with our team. Their resilience and dedication through a year of change has been extraordinary. As we move forward, we will increase our focus on professional development, clinical support, and opportunities for growth, so every practitioner feels equipped and supported. With their strength and commitment, we look to the future with optimism, knowing that Koorana will continue to deliver outstanding services for children, families, and the community.

Child and Family Supports

Supported Playgroups Looking Ahead

Looking ahead, the Supported Playgroup team is excited to continue strengthening our service by expanding learning opportunities for children and families. A key focus for the coming year will be the introduction and implementation of the PEEP Learning Together Programme across all supported playgroups. This evidence-based initiative promotes children's early learning in literacy, numeracy, and social-emotional development while supporting parents and carers to engage in their child's learning journey.

The roll-out of the PEEP programme will complement our existing play-based approach, embedding new activities and resources that encourage families to learn and grow together. It will also provide professional development for our facilitators, equipping the team with new tools to enhance parent-child interactions and strengthen family relationships.

By embedding PEEP into all playgroup sessions, we aim to deepen the impact of our work in preparing children for school and ensuring parents feel confident and supported in their role as their child's first teacher. This marks an exciting new chapter for the supported playgroup program and reflects our commitment to continuous improvement and innovation in community-based early childhood support.

Start Strong Pathways

Next year, we are hopeful that this important program will be funded to continue from 1 January 2026 onward. Our goal is to continue building safe, welcoming environments where young children can learn through play and families feel supported. The team will keep offering intentional, play-based sessions, new incursions, family workshops, and practical help to navigate enrolments and community services. We look forward to seeing children continue to grow in confidence, communication, and social skills.



WORKING GROUPS

Our dedicated team members continue to drive organisational culture, strengthen our commitment to inclusion, and embed Koorana's values across all programs and services. This year, each working group has made significant progress, building on last year's foundation and expanding its impact across the organisation.



Reconciliation Action Plan (RAP):

Continuing Our Commitment to Reconciliation

The RAP Working Group has achieved a major milestone this year with the finalisation of Koorana's Reflect Reconciliation Action Plan. Following a thorough consultation and drafting process, we have received feedback from Reconciliation Australia and begun incorporating these recommendations to submit the final document.

The group now meets every month to guide the next phase of this work. Artwork for the RAP has also commenced, reflecting our commitment to embedding Aboriginal and Torres Strait Islander perspectives across our organisation. The coming financial year will focus on preparing for full RAP endorsement and implementing the commitments outlined in the plan.



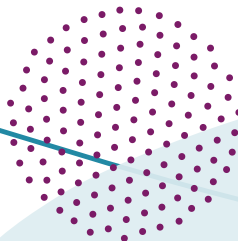
Sustainability:

Leading Eco-Conscious Practice Across Koorana

The Sustainability Working Group continues to grow, bringing together passionate team members dedicated to creating a greener future. Our regular ECO newsletters have continued throughout the year, sharing practical sustainability tips, community events, and opportunities to learn and take action.

We also continued our popular ECO Challenges, which encouraged staff to share their own sustainability practices at home and embrace reusable options such as keep cups. These activities have helped create stronger awareness and everyday behaviour change across the organisation.

Looking ahead, the group is developing a clear sustainability vision statement and a practical framework to guide sustainable practices across all Koorana sites.





Work Health and Safety (WH&S): Prioritising a Safe and Healthy Workplace

Koorana's Workplace Health and Safety Advisory Committee (WHSAC) continues to meet at least bi-monthly, with strong representation from teams across the organisation.

The committee is responsible for:

- Identifying and assessing workplace health and safety risks and hazards
- Recommending strategies and procedures to reduce risks
- Providing feedback on policies and safety procedures
- Reviewing and strengthening emergency evacuation processes
- Promoting a proactive culture of health, safety, and wellbeing
- Offering advice and support to employees and management on WH&S matters

This year, the group continued to strengthen WH&S awareness and ensure safety practices are embedded across all Koorana locations.



Diversity and Inclusion: Supporting Equity, Belonging, and Cultural Safety

The Diversity and Inclusion Working Group has continued to champion an environment where all team members feel valued, respected, and supported. This year, the group developed a Diversity and Inclusion Decision Tool to help teams recognise bias, strengthen inclusive practices, and support equitable participation in everyday work.

The group also continued key initiatives such as:

- Acknowledging cultural celebrations through social media and internal messaging
- Updating signage and visual representation at Head Office
- Reviewing policy statements to ensure inclusive language
- Planning organisation-wide cultural and awareness events
- Encouraging staff contributions through surveys and consultation

These actions have helped build a stronger sense of belonging across teams and ensured that diversity and inclusion remain embedded in Koorana's culture.

KOORANA'S COMMITMENT TO CHILD SAFETY

Koorana Child & Family Services remains unwavering in its commitment to promoting and protecting the safety and wellbeing of children and young people across all programs. Throughout the year, we continued to strengthen our policies, systems, and organisational culture to ensure children are safe, heard, and supported in every interaction with us.

This included ongoing refinement of policies and procedures, enhancing staff capability, and reinforcing clear, consistent pathways for reporting concerns.

Across the organisation, we strengthened our child safe culture by:

- **Publishing a Child Safe Incident Flowchart**, providing staff with a clear, practical guide to reporting responsibilities, escalation points, and regulatory timeframes. This tool has been embedded into staff induction, team meetings, and leadership discussions.
- **Continue requiring all staff to complete the annual Child Safety Refresher Training**, ensuring every team member remains up-to-date with their obligations.
- **Embedding regular Child Safe Updates** into our internal staff newsletter, keeping child safety visible and promoting continuous learning across our portfolios.
- **Reviewing and reflecting on our Child Safe Action Plan**, using it as a living framework to monitor progress, drive improvement, and maintain accountability across the organisation.

Most importantly, we continued to promote a child- and family-centred culture where open communication, feedback, and complaints are welcomed and acted upon. This reinforces our belief that child safety goes beyond compliance—it is lived every day in the relationships we build, the environments we create, and the trust our families place in us.

We acknowledge that this has been a challenging year for the broader sector, with child protection requirements continuing to evolve. Despite these pressures, Koorana remains proactive and steadfast in our approach.



**Community
Help**

**Always
Improving**

**Rules &
Routines**

**Children
First**

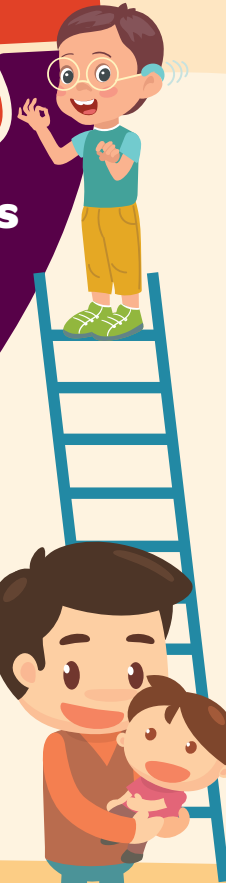
**Working
Together**

**Children's
Voices**

**Safety
Checks**

**Creating
Confidence**

**Everyone
Belongs**



MAKING AN IMPACT TOGETHER

> A Community Building Brighter Futures

Koorana has been overwhelmed this year with community support for our new inclusive preschool. This project would not have been possible without the generous support of our community partners.

Heidelberg Materials donated 70m³ of concrete for our carpark, footpath, and footings.



Building Works

Our building works were proudly funded by Koorana Child & Family Services, the NSW Department of Education and private donors. Our private donors have included some incredible businesses.

Bunnings donated a range of plumbing fixtures and fittings, paint, and kitchen appliances.

Reece Plumbing donated a range of plumbing fixtures and fittings.



Caesarstone donated four slabs to complete our kitchen, laundry and our prep area.

Signature Floors donated carpet tiles for our office areas.

Dulux donated our interior paint for the walls.



Outdoor Environment

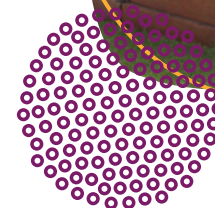
In the outdoor environment we were overwhelmed with even more support from Foundations and community members.

Frank Leyden Tot-Ed Trust donated a grant to support this area and making it inclusive.

The Bankstown Men's Shed built an incredible sand kitchen, water trough and loose play storage.

Tristan Booth built three benches for the play area.

Rodney Timm built a deconstructed ship and accessible sandpit, as well as, installed all of the irrigation for the outdoor area.



Learning Environment

No early learning space is complete without quality educational resources, furniture and equipment. Creating this environment was made possible thanks to the generous support of our local clubs – **Canterbury League Club, Bankstown Sports** and **Revesby Workers*** – whose grants helped bring this project to life. We also thank the **Trilogy Foundation** and **Edified** for funding therapeutic equipment that ensures our space is inclusive for all children.

Koorana was deeply grateful to receive a generous donation of LEGO sets from **Brickstatics** to support our LEGO Club and our new inclusive Bass Hill Preschool. This thoughtful contribution will spark creativity, imagination and joyful learning for many children across our services.

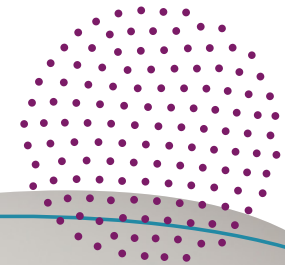


Office Environment

Equally important as the learning environment is an area for our staff team to be able to focus and unwind.

This area was made possible by a range of donors including:

- Two private donors who wish to remain anonymous who provided office equipment and three appliances.
- Other donors provided a kettle, plates and microwave.



General Donations

As if this support was not enough, we had so many friends and supporters get involved to support general fundraising for this project.

Sydney Marathon

In 2024 we had 39 staff and supporters run the Marathon, 10K and Family Fun Run and raise \$19,543. A huge congratulations to our Chair, Sujeet Jena, who ran the full 42.2 Km Marathon! In 2025, we had 7 staff and supporters run the Marathon and 5K. Our CEO, Morgan Fitzpatrick, completed the 42.2 Km Marathon. Together they raised \$4,338.

Lori's Football Lunch

We were incredibly pleased to have the support of Lori Messori who hosted a charity football lunch which raised \$4,000 for Koorana.

Community Raffle

We also held a small community raffle which was supported by the Canterbury Bulldogs, Youie's Café, MySwim Bass Hill, and the Bankstown Entertainment Park. With their support we raised \$804.

Bunnings BBQs

Last but not least our incredible team spent two Sundays on the BBQ at Bunnings raising funds and collectively raised \$1,890.



Total Impact

\$165,091

Cash
Donations

\$81,756

In Kind
Donations

\$246,847

Total

Over the minimum **10 years** we will operate this preschool, this will mean over **1,000 children** will be supported, **250** of which are expected to have additional needs, and all of which will be families who were prioritised due to their needs.

We want to give heartfelt thanks to our community partners who have made this preschool possible. We couldn't have done this without your support.

We are deeply grateful for the ongoing generosity of our donors and community supporters – your commitment makes everything we do at Koorana possible. Together, we're building a future where children of all abilities can thrive and reach their full potential.

*The ClubGRANTS scheme is a shared State Government-Club Industry program, funded by a 2.25% gaming machine tax rebate provided by the State Government to those registered clubs with gaming machine profits in excess of \$1 million per annum.

If you'd like to contribute and become part of Koorana's passionate donor community, helping us create opportunities for all children of all abilities and all possibilities, please contact our Impact team at impact@koorana.org.au

Our Donors

Canterbury
LEAGUE CLUB

revesbyworkers'club

BankstownSports

Heidelberg
Materials

Edified
Education Industry
Experts

CAROMA
Made For Life

Dulux

caesarstone

reece

myswim

BANKSTOWN
MEN'S SHED Inc.

Signature
signaturefloors

Yonies

BrickTastics
Creative play the Bricktastics way

ENTERTAINMENT

An Incredible Personal Contribution

We want to take this opportunity to call out the incredible effort of one of our Board members who went above and beyond on this project.

Rodney Timm has volunteered a remarkable amount of time and effort to overseeing this project. However, his work has not stopped there, by the end of the project he was spending his days sourcing timber, looking for donors, and finally on the tools building our incredible ship, accessible sandpit, and various other pieces for our outdoor area.

His weekends were spent digging trenches for the irrigation system, late nights spent sorting supply chain issues, and days spent ensuring every aspect of the project met our children, family and staff's needs.

This project could not have reached completion without his diligence and dedication. On behalf of everyone at Koorana and the local community – thank you, Rodney. You will forever be remembered at Koorana for your work on this preschool.







> Meeting Family Needs: Koorana Family Fun Days

To respond to various needs, especially the ongoing pressures of the cost-of-living crisis, Koorana again hosted two Family Fun Days this year. Each event brought together approximately 200 families for a day filled with connection, joy, and meaningful play. These free school-holiday events help relieve financial pressures while giving children and families access to high-quality, play-based experiences.

Our Family Fun Days also created a platform for collaboration across the community. We invited partner organisations and local services to participate, giving families direct access to important information, resources, and support. We sincerely thank these organisations for joining us and for providing vital information that helped families feel more informed, confident, and connected. The Family Fun Days continue to be an important way for families to explore Koorana's Supported Playgroups, Preschools, and Early Intervention and Allied Health services. For many, these events provide a soft entry point into Koorana, offering a comfortable space to ask questions, meet our staff, and learn about the supports available for their children.

Each event featured a wide range of activities designed to support learning through play. Children enjoyed sensory experiences, craft activities, imaginative play, obstacle courses, and dramatic play, all of which help build fine and gross motor skills, attention, communication, and social development. Special guests, including face painters and entertainers, added extra excitement and encouraged exploration.

Our specialist teams were present at each event to facilitate activities, answer questions, and provide guidance to families on child development, behaviour, early learning, and available supports. Parents and carers shared that these days helped them feel more connected, supported, and confident in their parenting role. Many families also made new friendships and expanded their local networks.

Koorana's Family Fun Days continue to be a meaningful way to respond to community needs, reduce barriers to participation, and create opportunities for children to learn and families to connect.

We look forward to continuing these events and supporting even more families in the year ahead.

We extend our heartfelt thanks to Canterbury-Bankstown Council and ClubGRANTS for their generous support in providing space and financial support for these events. Their contribution has played an important role in helping families feel welcomed, supported, and connected.

Do you want to support us?

You can help us continue providing free, inclusive events and essential supports for families by contributing to our Meet Family Needs initiatives. Every contribution helps us create opportunities for children and families in our community.

To learn more visit:

[Meet Family Needs | Support Koorana's Causes](#)



OUR PEOPLE

Koorana Staff as of June 2025

> **72**

Staff members

27

Early Intervention and Allied Health practitioners

18

Staff in Early Childhood Education

14

Staff members in Corporate Services

10

Child and Family Supports

7

Board of Directors



20

Early Childhood Teachers and Educators



10

Speech Pathologists



6

Specialist Teachers



9

Occupational Therapists



8

Casual Workers



1

Social Workers



2

Physiotherapists



3

Psychologists



1

Behaviour Support Practitioners

Average NPS of

8.42

True NPS of

+40

Koorana's most recent Team Survey showed a strong uplift in organisational confidence, with Early Intervention and Allied Health recording the greatest improvement and Leadership and Corporate Services continuing to demonstrate high confidence and alignment across the organisation.

“

At Koorana, we are committed to creating a workplace where every team member feels supported, valued, safe and inspired. We strive to provide an environment where people can grow professionally, enjoy meaningful collaboration, and feel confident in the work they do. Our teams benefit from flexibility, strong connections, and a culture that encourages both personal wellbeing and career development. Together, we aim to create a place where everyone can thrive.”

GOVERNANCE REPORT

The Board of Directors

As a community not-for-profit organisation, Koorana is run by a voluntary Board of Directors. The Board is responsible for the governance of Koorana and its outputs.

Board membership is voluntary. Board members bring with them specific professional expertise in finance, IT, property, education, human resources, marketing, law and not-for-profit management.

To ensure due diligence, four subcommittees complement the general Board structure:

- Stakeholder Feedback;
- Risk Management;
- Governance and Performance;
- Finance.

In the last Financial Year, Koorana's Members approved updates to our Constitution to better align to our current needs. This has included an update to the titles of our office-holders.



Sujeet Jena

Chair
2018 - Present

A seasoned executive with deep expertise in finance, audit, technology and risk management, with a distinguished career spanning global professional services, the community sector, academia and the arts across Asia, the USA and Australia. He has led major business transformation and technology projects, driving organisational growth and operational efficiency. Sujeet is a Certified Public Accountant (CPA) and a Fellow of the Chartered Accountants of India. He also serves as a Non-Executive Director and Chair of the Audit, Risk and Finance Committee at Warramunda, where he provides oversight of financial governance and risk management.



Allan Laurie

Vice Chair
2017 - Present

Allan is an executive search consultant with a background in business analytics, operational performance, talent identification/assessment/attraction, business development and government advisory. He consults to a group of diverse businesses in the Local, State and Commonwealth Government, infrastructure, heavy engineering, agriculture, education, health, social purpose, and the cultural sectors.



Rodney Timm

Non-Executive Director
2016 - Present

Rodney Timm joined the Koorana Board in 2016. He was Koorana's President from 2018 until December 2022. Rodney has in excess of 30 years' experience in the construction and real estate industry and has been involved in property and facilities management, valuation and development. He has provided consultancy services to both the property funds management and the corporate real estate sectors.



Syed Ammar Hasan

Treasurer
2008 - Present

Syed came to know about the work of Koorana when his children, now young adults, attended one of the Supported Playgroups.

Syed is the Senior Finance Manager at Toll Logistics. He is the Finance lead for their Retail Division. Syed brings with him a wealth of knowledge on best practice financial reporting. Syed has influenced Koorana's development of financial procedures and reporting. Syed joined the board in 2008. Syed is a Member of CPA Australia and holds a Master's degree in Business Administration.



Jodie Rollason

Non-Executive Director
2021 - Present

Jodie joined the Board in 2021 as a Non-Executive Director and is Chair of the Risk committee. She is also Chair of the Women's Plans Foundation and a Director on other boards. Bringing over 10 years' experience in the Not-for-Profit Sector, Jodie has recently moved to a new role as CEO of Financial Rights Legal Centre. With her passion for helping disadvantaged communities, Jodie thrives on advocacy and is committed to reducing social inequalities and systemic barriers to providing opportunities for the most vulnerable.



Luisa Vumbaca

Non-Executive Director
2021 - Present

Luisa joined the Koorana Board in 2021 as a Non-Executive Director. Bringing a wealth of industry experience, Luisa is a strategically focused senior marketing and communications professional, who has worked within multi-stakeholder organisations, across a variety of sectors. Admitted as a legal practitioner in NSW, Luisa also has in-house experience in ESG, policy and compliance, and commercial matters. Luisa is passionate about social justice and is a strong believer in the power of education where even the smallest effort can make a big difference.



Stefan Lamour-Jansson

Non-executive Director
2024 – Present

Stefan joined the Koorana Board in 2024 as a Non-Executive Director. He is currently the Executive Officer of The Girls & Boys Brigade, a charity supporting disadvantaged children, young people and families through educational, recreational and vocational programs. With a background in senior management within the leisure industry, Stefan brings strong experience in contract management and operations. He holds qualifications in filmmaking and business and is currently studying viticulture.



Jacqui Myers

Chief Operating Officer & Company Secretary
2024 – Present

Jacqui Myers is Koorana's Chief Operating Officer and Company Secretary, bringing strong leadership across operations, governance, human resources and organisational transformation. Appointed Company Secretary in late 2024, Jacqui has strengthened governance frameworks and provides critical support to the Board across compliance, reporting and oversight.

With a strong focus on people, culture and performance, Jacqui leads the operational backbone of the organisation, shaping systems, processes and workforce practices that enable quality services and sustainable growth.

TREASURER'S REPORT



“

Koorana has proven to be a strong organisation and delivered another solid year in terms of their financial performance, sustainability, and excellence in service.”

➤ **It is my privilege to deliver the report on the financials of Koorana Child & Family Services Ltd for the year ending 30 June 2025.**

The result for the year has been audited and signed off by our external auditor StewartBrown and is publicly accessible via the Australian Charities and Not-for-profits Commission (ACNC). This report covers the financial accounts representing the annual transactions of all Koorana activities delivered through our sites located at Lakemba, Roselands, Belmore, Miranda, Bass Hill and various community locations.

Koorana continued its reinvestment pathway throughout the year, advancing physical infrastructure at the Bass Hill Preschool and further strengthening information technology and client systems. While these investments carry upfront costs, the organisation returned to a surplus position in 2024–25, reflecting disciplined financial management, increased government and fee-for-service revenue, and a focus on sustainable service delivery.

Koorana closed the 2024–25 financial year with a surplus of \$781,720. Excluding capital revenue, the operational surplus was \$96,106.88, compared to a deficit of \$176,909 in 2023–24. This represents a significant turnaround and demonstrates the strength of Koorana's underlying operating position and capacity to reinvest in expanded services for children and families.

The Board and management remain focused on ensuring that strategic investments in key areas, particularly in property and digital systems to support long-term service sustainability and quality.

Cash flow

As at 30 June 2025, Koorana held available cash of \$634,031 compared to \$912,805 at the same time last year.

The reduction in available cash reflects:

- ongoing investment in capital projects (including the Bass Hill site)
- timing differences in grant receipts and payments
- the deliberate use of cash reserves to support strategic initiatives.

Koorana continues to actively manage its cash position through regular cash-flow forecasting and monitoring to ensure it can meet its obligations while continuing to invest where it matters most.

Equity

As at 30 June 2025, Koorana retained an equity balance of approximately \$3,425,245 compared to \$2,643,525 at the same time last year. The improvement in equity directly reflects the surplus achieved in 2024–25 and provides a stronger balance sheet to support future investment and service delivery.

In General

Koorana's financial performance and continued delivery of high-quality services in 2024–25 would not be possible without the collaboration and commitment of our stakeholders.

I would like to take this opportunity to thank:

- the operational team of Koorana, led by our CEO, Morgan A. Fitzpatrick, for their hard work, resilience and support
- all Board Members, for their governance, commitment and strategic oversight
- StewartBrown Chartered Accountants, for their expert advice and audit services
- and importantly, our donors, sponsors, partners and the families who trust Koorana to support their children.

The accounts for the period ending 30 June 2025 are herein presented for your perusal and acceptance, duly audited by StewartBrown – Chartered Accountants.

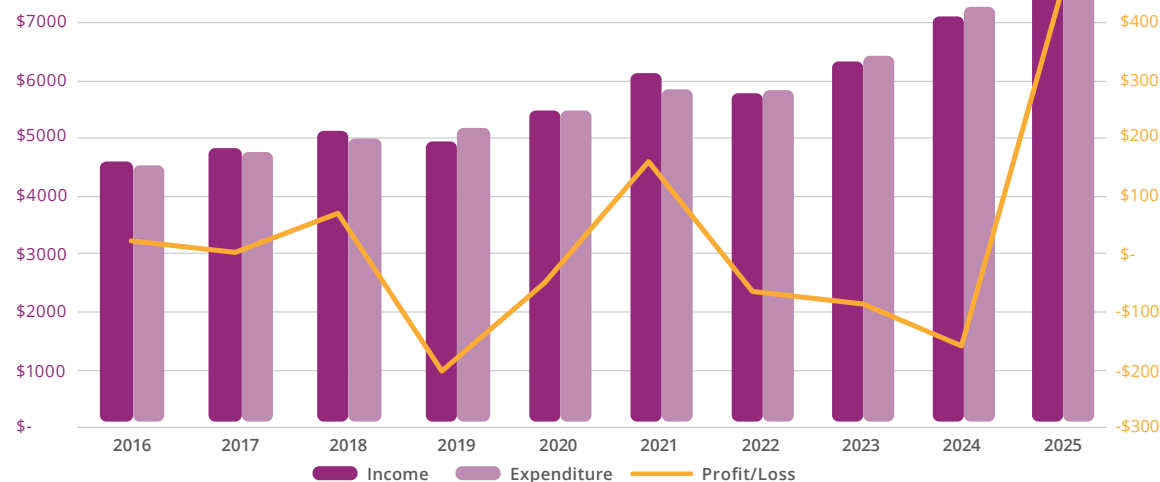
If you have any questions about the results or would like more information on anything mentioned above, please contact me or Morgan A. Fitzpatrick as CEO, or send us an email at accounts@koorana.org.au.

Syed Ammar Hasan

Treasurer,
Koorana Child & Family Services Ltd.

Year to year performance, 2016 to 2025

In '000



2025 Financial Highlights

In '000

\$8,253 Revenue from Ordinary Activities

\$6,103 Employee Benefits Expenses

\$742 Other Expenses from Ordinary Activities

\$411 Administration expenses

\$215 Depreciation & Amortisation Expenses

TREASURER'S REPORT

Income

Overall Income Comparison

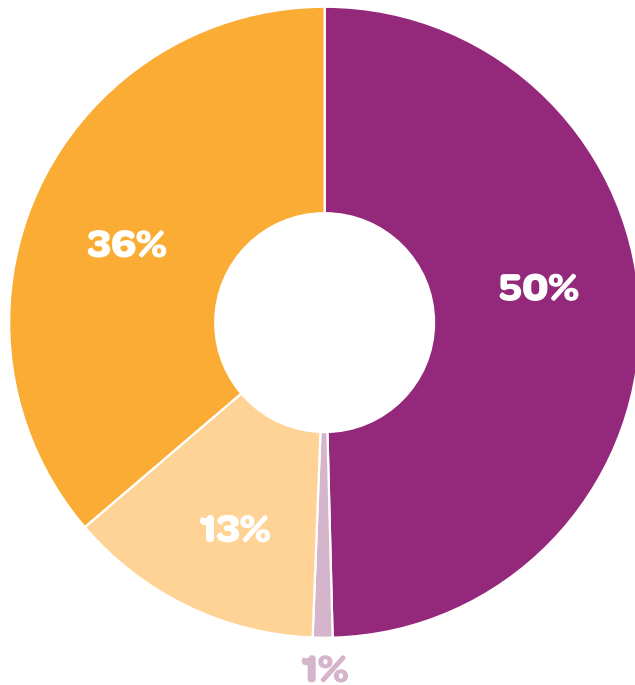
> **\$8,252,805**

2024-2025

\$7,104,845

2023-2024

Income Breakdown



- Intervention Support and Disability
- Community Support
- Sector Development
- Preschools

Summary Income Sources Comparison

- > Total operating grants received in 2024-25 were \$4,152,981 compared to \$3,413,231 for the same period last year.
- > Total fees received in 2024-25 were \$3,553,802 compared to \$3,291,413 fees received for the same period last year.
- > Total interest received in 2024-25 was \$486 compared to \$31,290 for the same period last year.
- > Other revenue received in 2024-25 was \$482,176 compared to \$321,762 for the same period last year.

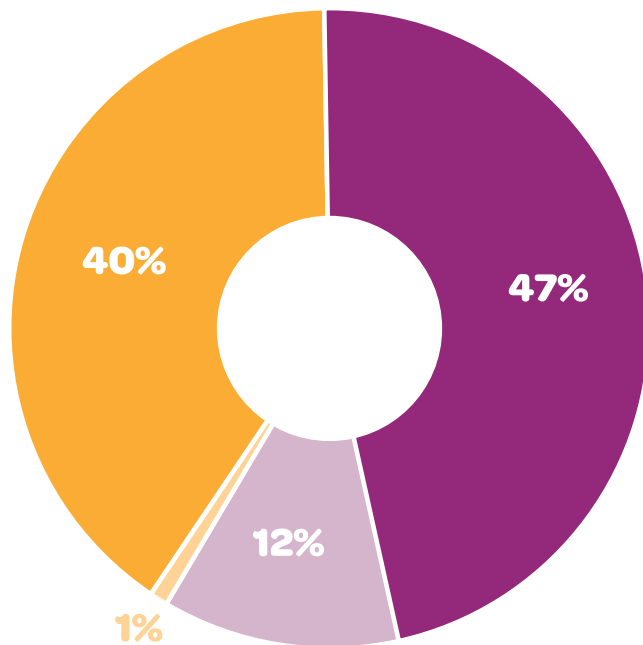
TREASURER'S REPORT

Expenses

Overall Expenses Comparison



Expenses Breakdown



- Intervention Support and Disability
- Preschools
- Community Support
- Sector Development

Summary Expenses Services Comparison

- Employee benefit expenses in 2024-25 were \$6,102,635 compared to \$5,939,719 in the same period last year.
- Depreciation & Amortisation expenses in 2024-25 were \$215,298 compared to \$216,621 for the same period last year.
- Occupancy expenses in 2024-25 were \$209,428 compared to \$227,930 for the same period last year.
- Program costs in 2024-25 were \$136,143 compared to \$182,932 for the same period last year.
- Administration expenses in 2024-25 were \$411,156 compared to \$327,006 for the same period last year.
- Finance cost expenses in 2024-25 were \$46,836 compared to \$47,842 for the same period last year.
- Other Supplies and services expenses in 2024-25 were \$349,589 compared to \$339,704 for the same period last year.

LETTER FROM THE AUDITOR

Opinion

We have audited the financial report of Koorana Child and Family Services Ltd which comprises the statement of financial position as at 30 June 2025, the statement of profit or loss and other comprehensive income, the statement of changes in funds and statement of cash flows for the year then ended, notes comprising a summary of accounting policies and other explanatory information, and the Director's Declaration.

In our opinion the financial report of Koorana Child and Family Services Ltd is in accordance with the *Australian Charities and Not-for-profits Commission Act 2012*, including:

- a) giving a true and fair view of the company 2025 and of its financial performance for the year then ended, and
- b) complying with Australian Accounting Standards - Simplified Disclosures and the Australian Charities and Not-for-profits Commission Regulations 2022.

Basis for Opinion

We conducted our audit in accordance with Australian Auditing Standards. Our responsibilities under those standards are further described in the *Auditor's Responsibility for the Audit of the Financial Report* section of our report. We are independent of the company in accordance with the auditor independence requirements of the Australian Charities and Not-for-profits Commission Act 2012 and the ethical requirements of the Accounting Professional and Ethical Standards Board's APES 110 Code of Ethics for Professional Accountants (the Code) that are relevant to our audit of the financial report in Australia. We have also fulfilled our other ethical responsibilities in accordance with the Code.

We confirm that the independence declaration required by the Australian Charities and Not-for-profits Commission Act 2012, which has been given to the Directors of the company, would be in the same terms if given to the Directors as at the time of this auditor's report.

We believe that the audit evidence we have obtained is sufficient and appropriate to provide a basis for our opinion.

Directors' Responsibility for the Financial Report

The Directors of the company are responsible for the preparation of the financial report that gives a true and fair view in accordance with Australian Accounting Standards - Simplified Disclosures and the Australian Charities and Not-for-profits Commission Act 2012 and for such internal control as the Directors determine is necessary to enable the preparation of a financial report that gives a true and fair view and is free from material misstatement, whether due to fraud or error.

In preparing the financial report, the Directors are responsible for assessing the company's ability to continue as a going concern, disclosing, as applicable, matters related to going concern and using the going concern basis of accounting unless the Directors either intend to liquidate the company or to cease operations, or have no realistic alternative but to do so.

The Directors are responsible for overseeing the company's financial reporting process.

Auditor's Responsibilities for the Audit of the Financial Report

Our objectives are to obtain reasonable assurance about whether the financial report as a whole is free from material misstatement, whether due to fraud or error, and to issue an auditor's report that includes our opinion.

Reasonable assurance is a high level of assurance but is not a guarantee that an audit conducted in accordance with the Australian Auditing Standards will always detect a material misstatement when it exists. Misstatements can arise from fraud or error and are considered material if, individually or in the aggregate, they could reasonably be expected to influence the economic decisions of users taken on the basis of this financial report. A further description of our responsibilities for the audit of the financial report is located at *The Auditing and Assurance Standards Board* and the website address is <http://www.auasb.gov.au/Home.aspx>

We communicate with the Directors regarding, among other matters, the planned scope and timing of the audit and significant audit findings, including any significant deficiencies in internal control that we identify during our audit.

Report on the requirements of the New South Wales Charitable Fundraising Act 1991 and the New South Wales Charitable Fundraising Regulations 2021

We have audited the financial report as required by Section 24 of the New South Wales *Charitable Fundraising Act 1991*. Our procedures included obtaining an understanding of the internal control structure for fundraising appeal activities and examination, on a test basis, of evidence supporting compliance with the accounting and associated record keeping requirements for fundraising appeal activities pursuant to the New South Wales *Charitable Fundraising Act 1991* and the New South Wales *Charitable Fundraising Regulations 2021*.

Because of the inherent limitations of any assurance engagement, it is possible that fraud, error or non-compliance may occur and not be detected. An audit is not designed to detect all instances of non-compliance with the requirements described in the above-mentioned Act and Regulations as an audit is not performed continuously throughout the period and the audit procedures performed in respect of compliance with these requirements are undertaken on a test basis. The audit opinion expressed in this report has been formed on the above basis.

Opinion

In our opinion:

- a) The financial report of the company has been properly drawn up and associated records have been properly kept during the financial year ended 30 June 2025, in all material respects, in accordance with:
 - i. Sections 20(1), 22(1-2), 24(1) of the New South Wales *Charitable Fundraising Act 1991*; and
 - ii. Section 17 of the New South Wales *Charitable Fundraising Regulations 2021*.
- b) The money received as a result of fundraising appeals conducted by the company during the financial year ended 30 June 2025 has been properly accounted for and applied, in all material respects, in accordance with the above-mentioned Act and Regulations.



Stewart Brown
Chartered Accountants

27 October 2025



S.J. Hutcheon
Partner



GET INVOLVED

If you would like to support the important work that Koorana does there are many ways to get involved.

> MAKE A DONATION

Building Brighter Futures

Koorana is currently raising funds to help with the completion of our third preschool. This preschool will continue in our inclusive tradition and create opportunities for children in need. Please contact us if you are interested in supporting this project or visit:

[Building Bright Futures](#) | [Koorana Child & Family Services](#)

Ensuring Strong Starts

A small donation can make a big difference in a child's life by providing access to essential therapies. These supports are often difficult to access for families who do not qualify for the NDIS but whose children require help. To support this project, please contact us or visit: [Ensuring Strong Starts](#) | [Support Koorana's Causes](#)

Innovate for Outcomes

Donations to support our advocacy and research projects help ensure children and families receive the highest quality supports possible. To learn more or contribute, please contact us or visit:

[Innovate for Outcomes](#) | [Support Koorana's Causes](#)

Meeting Family Needs

Koorana is committed to helping families facing the cost-of-living crisis. Support this initiative to ensure families can access free school-holiday activities for their children. To contribute, please contact us or visit: [Meet Family Needs](#) | [Support Koorana's Causes](#)

Please give via the donate button on our website at [Koorana Child & Family Services | Donate](#)

Koorana holds endorsement as a deductible gift recipient. All donations over \$2 are tax deductible.

> BECOME A CORPORATE PARTNER

Koorana believes that strong partnerships between businesses, the community, and government can create meaningful educational, therapeutic, and family supports for children. Partnering with Koorana can help improve staff engagement, build morale, and make a real difference in the community. Learn more:

[Become a Corporate Partner](#) | [Support Koorana's Causes](#)

> VOLUNTEER

By volunteering even a few hours of your time, you or your team can make a positive impact in your local community and help create a more inclusive world for children. Discover opportunities at:

[Volunteer](#) | [Koorana Child & Family Services](#)

> FUNDRAISE FOR KOORANA

Fundraising is a great way to support children in your community while having fun and meeting new people. You can host a social event or create a fundraising page to support children in need. Talk to us about your idea.

> REMEMBER US IN YOUR WILL

A gift to Koorana in your Will allows your generosity to continue into the future. Please talk to us about how you would like your gift to be remembered or visit [Remember Us In Your Will](#) | [Koorana Needs Your Support](#) for more information.

> JOIN THE BOARD

If you would like to contribute your skills and expertise by volunteering as a Board member, please send your resume to: people@koorana.org.au or call us for more information.

For more information on how you can help Koorana provide essential early childhood services and programs across the community, please call 1300 566 726 or visit koorana.org.au.

THANK YOU

Koorana would like to sincerely thank and acknowledge our generous funding bodies, partners, Parliamentarians and supporters. Your continued support of our work has enabled Koorana to support children and families through this past year. This list includes but is not limited to:

- NSW Department of Communities & Justice (DCJ)
- NSW Department of Education (DoE)
- National Disability Insurance Scheme (NDIS)
- The Smith Family
- Our local NSW State Members of Parliament – Hon Sophie Costis, Ms Kylie Wilkinson, Hon Jihad Dib, Dr David Saliba – and Federal Members of Parliament – Hon Tony Burke, Hon Linda Burney, Hon Jason Clare
- Our NSW Ministers – Hon Kate Washington, Hon Prue Carr, Hon Ryan Park – and Shadow Minister – Hon Natasha Maclaren-Jones, Hon Sarah Mitchell, and Hon Kellie Sloan
- Our outgoing and new Commonwealth Ministers – Hon Bill Shorten, Hon Jason Clare, Hon Anne Aly, Hon Amanda Rishworth, Hon Mark Butler, Hon Jenny McAllister, Hon Jess Walsh, Hon Tanya Plibersek – and Shadow Ministers – Hon Michael Sukkar, Hon Sarah Henderson, Hon Anne Ruston
- Canterbury- Bankstown City Council
- Canterbury Bankstown Chamber of Commerce
- Canterbury League Club
- Revesby Worker’s Club
- Canterbury Hurlstone RSL Club
- Bankstown Sports Club
- Vicinity Centres
- Edified
- Frank Leyden Tot- Ed Trust
- Dulux
- Bunnings Villawood
- Reece Villawood
- Heldeberg
- PayPal Giving Fund
- Canterbury Bulldogs
- Entertainment Park
- Youies
- Signature Floors
- MySwim Bass Hill
- Caesarstone
- Trilogy Foundation
Canterbury Bankstown
- Lori’s Football Lunch
- Men’s Shed Bankstown
- National Disability Services (NDS)
- Early Childhood Intervention Best Practice Network Partners
- Child and Family Supports Alliance (CaFSA NSW) Partners
- Australian Child and Family Supports Alliance Partners
- Western Sydney University
- The Youth Partnership
- Early Childhood Partners in the Community: LifeStart & EACH
- Canterbury Child and Family Interagency Partners
- Bankstown PCYC
- Public Schools: Riverwood Public School, Bass Hill, Chullora, Panania North, Hampden Park, Hannans Road, Campsie, Earlwood, Belmore South, Narellan, Yandelora, Tower St, Villawood East, Banksia Road, Lakemba and Padstow North
- Belmore South St Mel’s Catholic School
- Uncle Jimmy Smith
- Lakemba Uniting Church
- Canterbury Hospital
- MTC Australia
- Canterbury and Bankstown District Early Childhood Health Centres
- Lakemba SaCc
- Lakemba Muslim Association (LMA)
- Prosper Campsie
- The various consultants who support Koorana on projects
- Our suppliers
- Our donors
- All other partner organisations

We would also like to thank the many parents, families and carers who have generously shared their skills to support our organisational activities.





Koorana Child & Family Services Ltd

Shop 5-6 / 721B Canterbury Road,
Belmore NSW 2192

Call us **1300 566 726**
Email us **enquiries@koorana.org.au**

📍 @koorana
📱 @koorana_child_and_family
🌐 koorana.org.au

